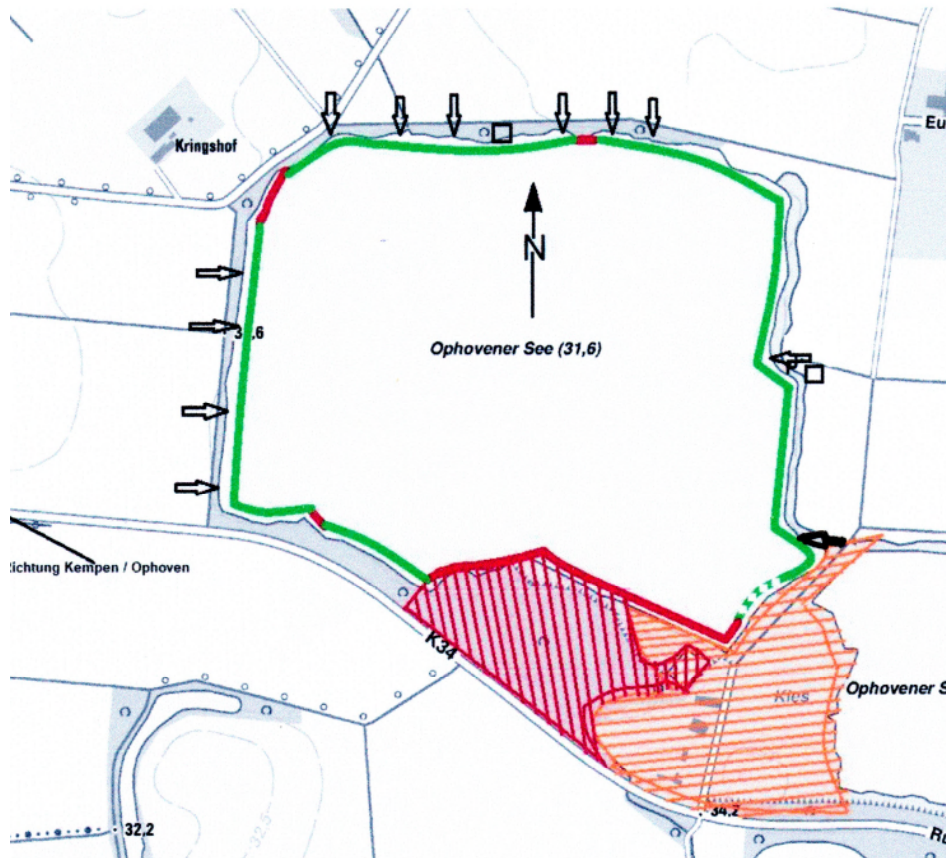











# Angelgemeinschaft Ophovener-Seenplatte

## Gewässerkarte AGOS Stand Juli 2020



-  Zulässige Angelstrecke der Mitglieder der AGOS Vereine
-  Angeln nur bei ruhendem Werksbetrieb gestattet. z.B. Wochenende
-  Angeln verboten! Vogelschutzbereiche / Unfallgefahr
-  Zugangstore
-  DIXI Toiletten
-  Betriebsgelände / Transportanlagen
-  Vogelschutzzone, Angeln verboten!